

2015



NETZOOM CLASSROOM TRAINING

By Altima Technologies, Inc.

This brochure explains the training structure for NetZoom



ALTIMA
TECHNOLOGIES, INC.

Altima Technologies, Inc.
2300 Cabot Drive, Suite 535
Lisle, IL 60532

P: 630.281.6464 | Sales@NetZoom.com | www.NetZoom.com

Copyright © 2015 by Altima Technologies, Inc.

NETZOOM CLASSROOM TRAINING	2
HOW DO YOU BENEFIT FROM NETZOOM CLASSROOM TRAINING?	3
NETZOOM CLASSROOM TRAINING PROGRAM OVERVIEW	4
OBJECTIVE	4
COURSE TYPE	4
REQUIREMENTS	4
LOCATION	4
INFRASTRUCTURE	4
TRAINERS	4
WHAT'S INCLUDED WITH A NETZOOM CLASSROOM TRAINING	4
NETZOOM SYSTEM REQUIREMENTS	5
NETZOOM TRAINING SYLLABUS	6
NETZOOM TRAINING PRICING	8
CLIENT TRAINING	8
LEARN MORE ABOUT NETZOOM PRODUCTS!	9

NetZoom Classroom Training

NetZoom enables users to perform all of their Microsoft® Visio data center and network tasks in one convenient application. The application helps network and data center professionals to discover, design, document, and diagram with ease.

NetZoom is the ultimate productivity tool that helps professionals manage their assets, as well as design and document the physical infrastructure of their networks and data centers. NetZoom includes a variety of automation tools and productivity tools that allow you to manage your assets with ease. Replicate your data center exactly using the World's Largest Device Shapes Library containing more than 400,000 shapes. Take control of your assets and visualize your current network, or even future ideas, by creating high-quality, professional diagrams and reports including floor layouts and detailed rack elevations.

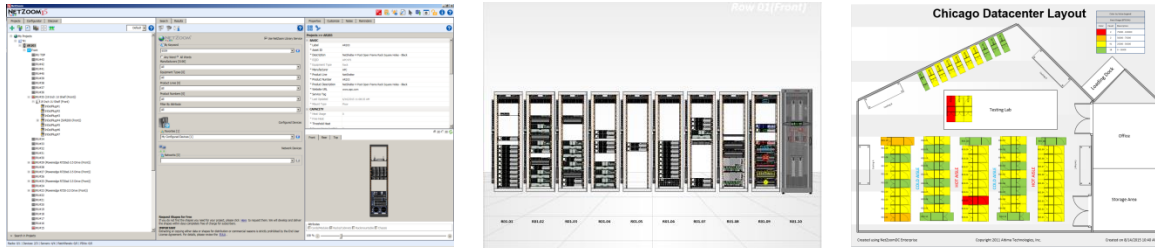
The latest release allows you model port to port connectivity of your devices, track the port connectivity of both power and data in your data center and also generate a range connectivity reports for reporting, installation, or troubleshooting purposes

We invite you to take advantage of the NetZoom Classroom Training to gain a better perspective of NetZoom and how you can benefit the most from its exciting features. Participating in the Classroom Training will not only teach you about NetZoom and its various features, but it will also show you how to implement NetZoom in your working environment for the best return-on-investment. Classroom training will also teach you how to optimally discover, design, diagram, and document your networks and data center using our product.

The NetZoom Classroom Training is a two day training course which includes lectures and labs. The training lasts from 8:30 AM to 5:30 PM, on the dates of your choice. Training can take place at either our Altima Technologies facilities in Lisle, IL or at a client specified site. Training will be provided by NetZoom certified trainers. Training is organized and charged for up to five attendees or in multiples of five. Additional attendees will be charged on a per person basis, or in multiples of five. Upon the completion of the training course, participants will receive NetZoom certification along with a workbook and other resource files.

You must register for training and schedule the training with us at least two weeks in advance, and registration must be secured with a credit card. Cancellations must be made one week prior to the training date for a refund.

How Do You Benefit From NetZoom Classroom Training?



After attending NetZoom Classroom Training you'll be able to:

- Implement NetZoom for Data Center Physical Asset Management in your work environment
- Discover and monitor your networks
- Work with NetZoom as a stand-alone application or use it directly from within Visio
- Accurately Model all of your power and data connections down to the port level
- Generate professional reports for your network
- Create Microsoft Visio diagrams of your data centers and rack elevations
- Find and model you desired hardware shapes from the NetZoom Library to collect your asset inventory
- Update your NetZoom library from local files or use our extensive cloud library
- Use your existing spreadsheets and diagrams with NetZoom
- Use NetZoom to model your Zero-RU, Reverse Mounted, and Top of rack devices
- Personalize and create your own library of favorite shapes using customized hardware equipment shapes that match their real-life configurations
- Manage custom properties, data, and other information for your data center and network assets to track them
- Take advantage of our complimentary shape creation services
- And much more...

For more information on NetZoom classroom training or pricing, or to sign up for training, please call 630.281.6464 (8:30 AM – 5:30 PM Monday – Friday US CST) or e-mail us at Support@NetZoom.com.

*Note from Nick Albano – Senior Manager of Professional Services:

“We pride ourselves on delivering exceptional training and services; My aim for users that attend our trainings is to give you the tools and training that you'll need to equip yourself to stay on top of managing assets and infrastructure in a constantly changing IT environment.”

Though the training you'll develop the confidence you need to tackle even the biggest projects, you'll also develop a valuable relationship with your trainer that you'll be able to leverage going forward to answer any questions that come up, or to get guidance on best practices to approach a difficult project.”

NetZoom Classroom Training Program Overview

Objective

Attendees will master how to use NetZoom for network or data center management, how to discover and monitor networks, and how to generate professional reports and diagrams.

Course Type

Two Day Training including Labs (8:30 AM – 5:30 PM, dates as specified by client).

Requirements

Each participant is expected to bring a computer or notebook with all prerequisite software pre-installed and sufficient disk space available to install and run the product. You must also bring your subscription number with you. Proficient knowledge of Microsoft Visio and Microsoft Excel is recommended.

If the training is provided at the Client site, you must also provide a high speed Internet connection for the instructor.

Location

The location of the training is your choice, Altima Technologies, Inc. can host the training at our facilities in Lisle, IL, or a NetZoom certified trainer can travel to a location of your choosing.

Infrastructure

If the training is provided at Altima Technologies, Inc. in Lisle, IL, the following infrastructure will be provided:

- Training Lab
- Internet Connection

If the training is located at a Client site, this infrastructure must be provided by the client as it's required for the training.

Trainers

All trainers are NetZoom Certified Trainers.

What's Included with a NetZoom Classroom Training

Upon completion of the training program, participants will receive NetZoom Certification certificate.

Participants will be provided a workbook and a flash drive with necessary files.

Participants will receive NetZoom Polo Styled Shirts.

NetZoom System Requirements

Ensure that the following prerequisites are met by your workstation before installing NetZoom.

Hardware

- Intel Multi-Core Processor 2GHz+
- 4 GB RAM +
- 4 GB Hard Disk +
- 1024x768 Resolution Monitor +

Supported Operating Systems (32 bit and 64 bit systems)*

- Microsoft Windows 10
- Microsoft Windows 8
- Microsoft Windows 7

Software*

- Microsoft SQL Server Compact Edition 3.5 SP2**
- Microsoft .NET Framework 4.5+
- Microsoft Word 2007, 2010, 2013
- Microsoft Excel 2007, 2010, 2013
- Microsoft Visio Professional 2007, 2010, 2013
- Microsoft Visual C++ 2010 Redistributable **
- Microsoft Office Access Database Engine 2010
- Microsoft Visual Studio 2010 Tools for Office Runtime
- Microsoft Windows Installer 4.5 +
- Adobe Reader 9.4 +
- Microsoft Internet Explorer 9.0+

Supported Host Applications (32 bit and 64 bit systems)*

- Microsoft Visio Professional 2007, 2010, 2013

Other

- NetZoom Subscription Number
- High Speed Internet Connection

* Officially supported on United States English versions.

** 64 bit machines require both the x64 and x86 installations of this prerequisite. 32 bit machines require the x86 installation only.

Refer to the respective Microsoft and Adobe websites for instructions on downloading and installing the prerequisites.

NetZoom Training Syllabus

DAY ONE

LAB 1 – GETTING STARTED

Prerequisite:

Resources: NetZoom Subscription Number, NetZoom Setup.exe, Internet Connection

Topics: Introduction to NetZoom (Discussion)
Prerequisites (Discussion)
Download Files and Install (Demonstration & Lab)
Activate (Demonstration & Lab)

LAB 2 – NETZOOM QUICK OVERVIEW

Prerequisite:

Resources:

Topics: NetZoom Interface and Panes (Discussion)
Support Options (Demonstration)
Settings and Options (Discussion)

LAB 3 – USING NETZOOM LIBRARY

Prerequisite:

Resources: NetZoom Library

Topics: What is the NetZoom Library (Discussion)
Update Library and Use Library from Remote Server (Demonstration & Lab)
Search Library & Find Results (Demonstration & Lab)

LAB 4 – CONFIGURATOR

Prerequisite:

Resources:

Topics: What is a Configurator? (Discussion)
Manage Favorite Equipment Shapes (Demonstration & Lab)
Configure Racks and Devices (Demonstration & Lab)
Search and Use Favorite Shapes (Demonstration & Lab)

LAB 5 – NETWORK DISCOVERY

Prerequisite: A prepared network will be required if training is on client site.

Resources:

Topics: Prepare Network for Discovery (Discussion)
Define and Discover Network (Demonstration & Lab)
Manage Network (Demonstration & Lab)
Explore and Read Network (Demonstration & Lab)
Search Network (Demonstration & Lab)
Network Reports (Demonstration & Lab)
Monitor Network Devices (Demonstration & Lab)
Use Network Devices in Projects (Demonstration & Lab)
Monitor Network Devices in Project (Demonstration & Lab)

QUESTIONS & ANSWERS

DAY TWO

LAB 6 – PROJECT EXPLORER

Prerequisite: Hands on knowledge of Microsoft Excel

Resources: SmallDataCenter.xlsx, Location.map, Row.map, Sample Diagram Import 1.vsd, Sample Diagram Import 2.vsd

Topics: What is a Project Explorer?	(Discussion)
Manually Build a Network or Data center	(Demonstration & Lab)
Top of Rack and Zero RU device mounting	(Demonstration & Lab)
How to Prepare Spreadsheets for Import	(Demonstration & Lab)
Import from Spreadsheet and Diagrams	(Demonstration & Lab)
Auto-Generate Reports, Diagrams, Layouts	(Demonstration & Lab)
Search Data Center for Equipment	(Demonstration & Lab)
Report Builder Wizard	(Demonstration & Lab)

LAB 7 – PROPERTIES & DATA

Prerequisite:

Resources:

Topics: Properties Grid and Previews	(Discussion & Demonstration)
Create Custom Properties	(Demonstration & Lab)
Customize Data Display	(Demonstration & Lab)
Using Watermarks	(Demonstration & Lab)
Manage Notes	(Demonstration & Lab)
Manage Reminders	(Demonstration & Lab)

LAB 8 – NETZOOM INTEGRATED WITH MICROSOFT VISIO

Prerequisite: Hands on knowledge of Microsoft Visio

Resources:

Topics: Host Applications	(Discussion)
Launch NetZoom within Microsoft Visio and Review Project Templates	(Discussion & Lab)
Data center Wizard	(Demonstration & Lab)
RackBuilder Wizard	(Demonstration & Lab)
Export Data	(Demonstration & Lab)

LAB 9 – CONNECTIVITY

Prerequisite:

Resources:

Topics: Data Connections	(Demonstration & Lab)
Power Connections	(Demonstration & Lab)
Reporting	(Demonstration & Lab)
Diagrams	(Demonstration & Lab)

LAB 10 – CONCLUSION

Prerequisite:

Resources:

Topics: Services	(Discussion)
Backup and Uninstall	(Demonstration & Lab)

QUESTIONS & ANSWERS

NetZoom Training Pricing

Client Training

Training sessions are organized and charged for multiples of five personnel.

Per instructor, per day, including travel days if applicable	Attendance	Any additional attendance
USD \$1200*	Up to 5	USD \$500 per person per day

*Additional charges will apply for out-of-pocket expenses such as travel, hotel, etc.






Learn more about NetZoom Products!

NetZoom Pro is the advanced multi-user web version of NetZoom.

NetZoom Pro is great if you have a team of users who would like to collaboratively manage IT and data center infrastructure assets, rack elevations, floor layouts, and generate reports and Visio Diagrams. NetZoom Pro is packed with hundreds of additional features, report templates and diagramming templates for your use to help you professionally manage your assets easily.

NetZoomDC is the most feature rich, fully-scalable, enterprise Data Center Infrastructure Management (DCIM) software. It enables data center professionals to Model, Manage, Monitor, and Maximize data center assets, space, power, and cooling.

NetZoomDC empowers users with real-time insight into the management of the data center by answering the core questions "What is in your data center?", "How is your data center operating?", "What can be optimized?" and "Where is your data center heading?"

Comparison Summary			
Product			
Collaborative Users	Single user	Team/Multi-User	Enterprise/Multi-User
Number of Racks & Cabinets	50	50 per User	Unlimited
Number of Physical Data Centers	1	1	Unlimited
Application Platform	MS Windows Application	Browser/Web-Application	Browser/Web-Application
Configure Devices with Cards & Modules	✓	✓	✓
Port Connectivity Management	✓	✓	✓
Agentless Discovery of Devices	✓	✓	✓
Auto-Diagram Rack Elevations in Visio	✓	✓	✓
Inventory Collection & Audit		✓	✓
Dashboards & Advanced Reporting		✓	✓
Move, Add & Change Management			✓
Power & Thermal Management			✓
Real-Time Monitoring & Alerts			✓
Trends, Forecasting & What-If Analysis			✓
Integrates with popular CMDB, Hypervisor & other Applications			✓
Mobile App		Available	Available